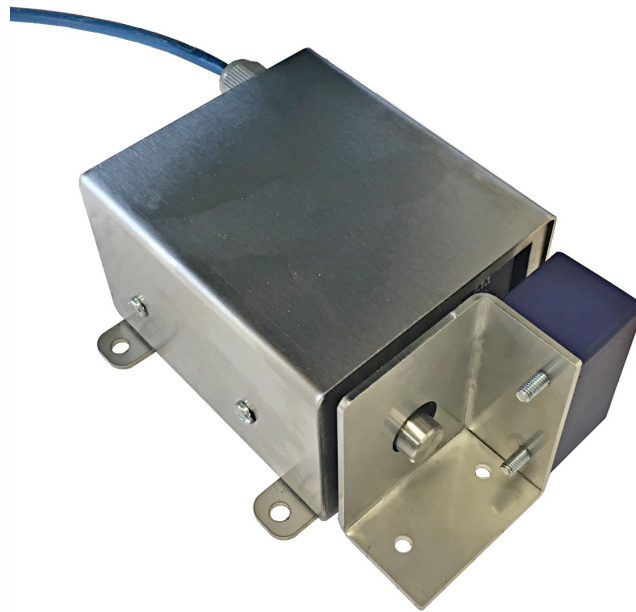




## PLU2 Stainless Steel Pneumatic Guard Locking Unit



The Mechan stainless steel PLU2 Air operated Locking unit is a complete, fail-safe system designed to lock a Gate or Access Lid securely until it is safe to enter. This can be determined either by a Motion Stop detector or a simple timer. It incorporates both a Bolt Position Sensor Switch and a Mechan Guard switch to sense when the locking bracket is in position. The bolt must be in the out position and the locking bracket in place before the machine can be re-started.

The unit is designed to work in the roughest of environments and is easy to access should maintenance ever be necessary. Units such as the one shown have been in operation on, for example, Concrete Mixer Lids for many years now with total reliability.

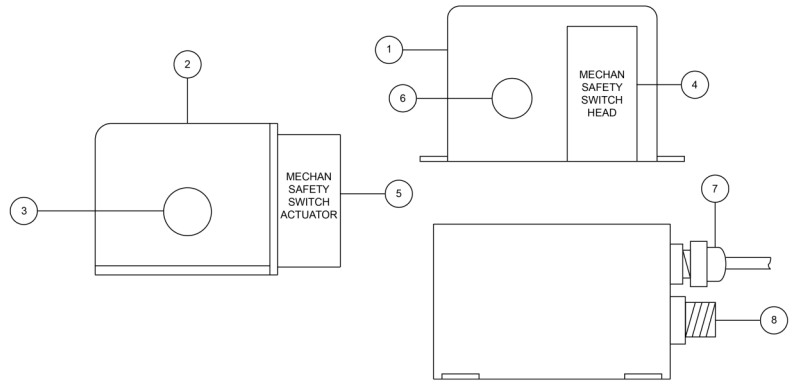
- Versions available for FM1 Control Modules.
- Compact, Safe, Simple to install .
- Quick fit pneumatic connections.
- Fail Safe totally sealed cylinder.
- Uniquely coded sensors available.
- Stainless Steel construction.

# TECHNICAL SPECIFICATION

## LOCKING UNIT type – PLU-2

### PRODUCT IDENTIFICATION

- 1 Mechan Pneumatic Locking Unit
  - 2 Bracket (Fits to gate)
  - 3 Locating hole for pneumatic bolt
  - 4 Mechan Safety Switch
  - 5 Mechan Safety Actuator
  - 6 Pneumatic Bolt
  - 7 Mechan Safety Switch Cable exit
  - 8 Push fit pneumatic air inlet
- (See dimensions sheet for fixing holes positions and size)



### SYSTEM OPERATION

- 1 The Mechan Pneumatic Locking Unit (PLU2) is connected to the Safety Switch input and a timed air supply as shown.
- 2 When the guard is closed, the Mechan Safety Switch & Actuator are aligned and the pneumatic bolt fully extended locking the bracket in position, the control module relays (13/14 and 23/24) can be energised by pressing the reset button.
- 3 When the timer relay T1 is energised the supply to the solenoid valve is removed and the solenoid bolt cannot be unlocked.
- 4 Pressing the stop button de-energises T1 and the air supply can be restored to the PLU via the time delay operated valve. ( Note: Motion Stop detectors can be used for the same purpose ).

### ADDITIONAL ORDERING INFORMATION

- 1 Part Numbers : PLU2
- 2 FM1 Control Unit Required for operation

### CONNECTIONS/DIMENSIONS

