

Pneumatic Guard Locking Unit

The Mechan PLU Air operated Locking unit is a complete, fail-safe system designed to lock a Gate or Access Lid securely until it is safe to enter. This can be determined either by a Motion Stop detector or a simple timer. It incorporates both a Bolt Position Sensor Switch and a Mechan Guard switch to sense when the locking bar (not shown) is in position. The bolt must be in the out position and the locking bar in place before the machine can be re-started.

The unit is designed to work in the roughest of environments and is easy to access should maintenance ever be necessary. Units such as the one shown have been in operation on, for example, Concrete Mixer Lids for many years now with total reliability.

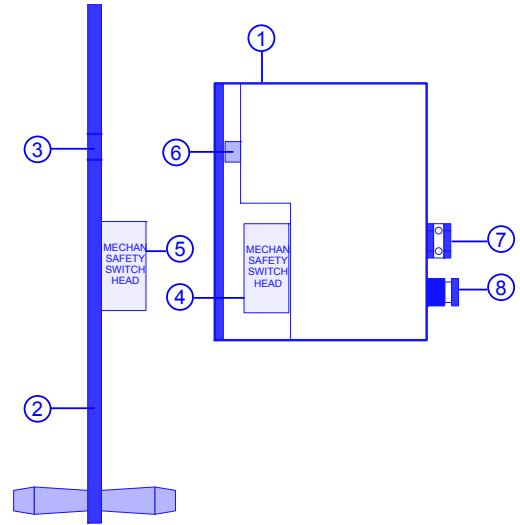
- Versions available for 'F' series or CODEX Control Modules .
- Compact, Safe, Simple to install .
- Quick fit pneumatic connections.
- Fail Safe totally sealed cylinder.
- Uniquely coded sensors available.
- Aluminium and stainless construction.

TECHNICAL SPECIFICATION

LOCKING UNIT type – PLU-F

PRODUCT IDENTIFICATION

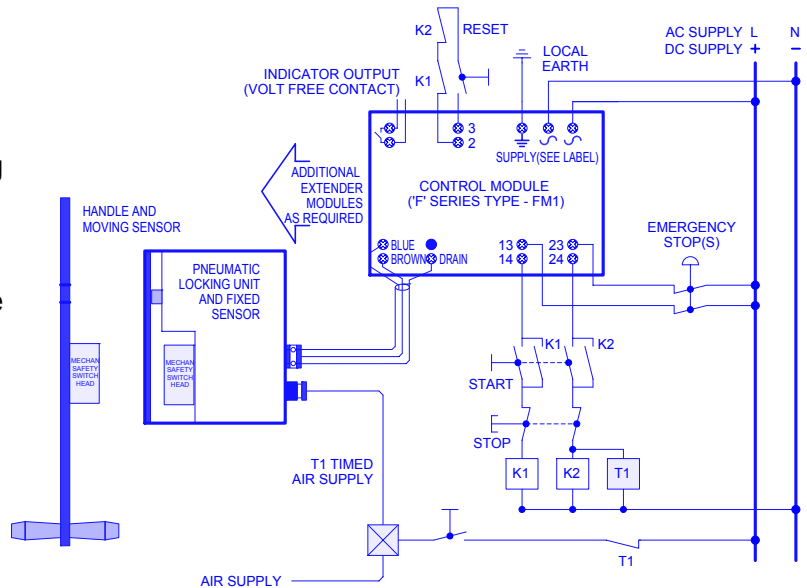
- 1 Mechan Pneumatic Locking Unit
- 2 Handle (Fits to gate)
- 3 Locating hole for pneumatic bolt
- 4 Mechan Safety Sensor (Receiver can be either CODEX or 'F' Series)
- 5 Mechan Safety Sensor (Oscillator can be either CODEX or 'F' Series)
- 6 Pneumatic Bolt
- 7 Mechan Safety Sensor Cable exit
- 8 Push fit pneumatic air inlet
(See dimensions sheet for fixing holes positions and size)



SYSTEM OPERATION

- 1 The Mechan Pneumatic Locking Unit (PLU) is connected to the Safety Switch Sensor input and a timed air supply as shown.
- 2 When the guard is closed, the Mechan Safety Switch Sensors are aligned and the pneumatic bolt fully extended locking the handle in position, the control module relays (13/14 and 23/24) can be energised by pressing the reset button.
- 3 When the timer relay T1 is energised the supply to the solenoid valve is removed and the solenoid bolt cannot be unlocked.
- 4 Pressing the stop button de-energises T1 and the air supply can be restored to the PLU via the time delay operated valve. (Note: Motion Stop detectors can be used for the same purpose).

CONNECTIONS



ADDITIONAL ORDERING INFORMATION

- 1 Part Numbers : PLU – F (for the 'F' series version)
- 2 Part Numbers : PLU – CDX (for the Codex version)

See the 'F' Series or CODEX Safety System literature, document numbers **f-lit-v2** or **cdx-lit-v3** for more general information and the 'F' Series and CODEX Installations Guide for more detailed installation notes.